



Video:



PHOTOS: Click the link below to view all high resolution images

https://app.aspenfieldservices.com/api/attachments/get/rqsYjZgzSFMx9AFyy/full_report_0026117_rqsYjZgzSFMx9AFyy.pdf?view

NOTE: By clicking above, you will be redirected to Aspen Field Services' website, not a Wells Fargo property.

Inspection Details

Year	2017
Make	Vogele
Model	5100-2
Serial Number	13820132
Type	Paver
Inspection Date	12/04/2020
Location of Business	JJ KANE - 3020 Commercial Rd , Fort Wayne, IN, 46809, USA
Attachment(s)/Accessory(s)	None
Engine MFR	Vogele
Controls	Standard
Hours	6138
Keyless Start	No
Visual Inspection	Clean
Operational Test	Passed
Left Track Condition	Gauges



Aspen Field Services

Job #: 26117 /

Serial #: 13820132

For more information, visit:

wellsfargo.com/equipmentseller

2017 VOGELE 5100-2

Inspection Details Cont'd

Left Track Part Number	Not Available
Left Track Tread Depth Percentage	Less than 50%
Left Track Tread Depth Measurement	25/32"
Right Track Condition	Good
Right Track Part Number	Not Available
Right Track Tread Depth Percentage	Less than 50%
Right Track Tread Depth Measurement	24/32"
Mismatched Tracks	No
Cylinders	Good
Material Hoppers Operations	Not Available
Seat	Tear
Tailgate Lights	Not Available
Working Lights	Not Available
Material Hoppers Damages	None
Engine Door	Opens and Closes/Stays Closed
Mufflers	Good Condition
Intake Screen	Good Condition
Engine Compartment	Dirty
Customer Decals Visible on Unit	No
Engine Serial Number	22112420
Comments	The material hopper pads need to be replaced. The tar needs to be cleaned out of the hopper and belt.

Inspection Details Cont'd

Aspen Field Services



Front Left / 12-03-2020



Front Right / 12-03-2020

Aspen Field Services

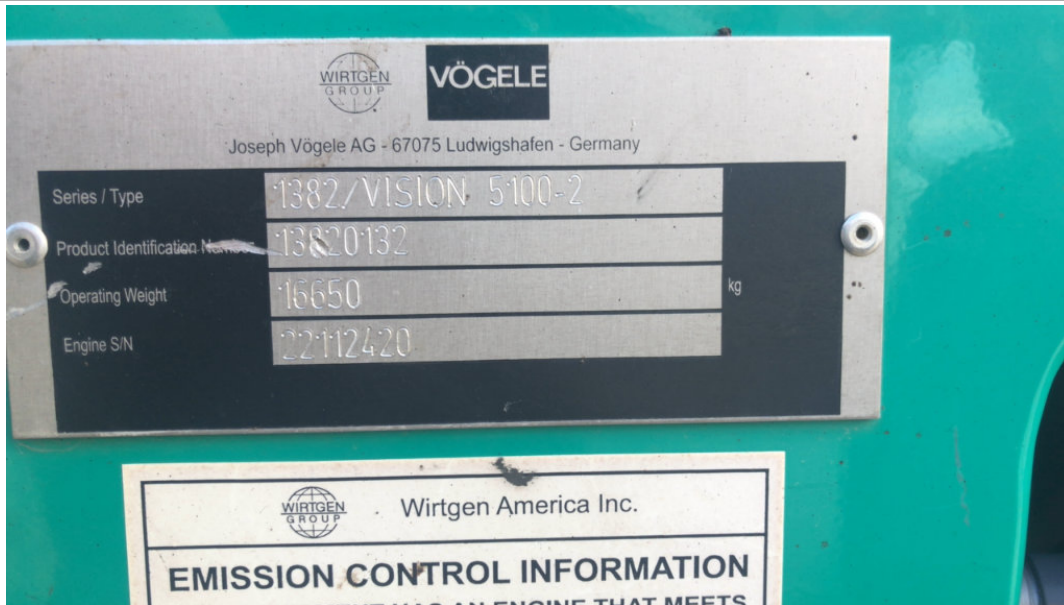


Rear / 12-03-2020



Tear / Seat / 12-03-2020

Aspen Field Services



13820132 / Serial # / VIN # / 12-03-2020



Rear / 12-03-2020

Aspen Field Services



Passenger Tear / Seat / 12-03-2020



Left Side / 12-03-2020

Aspen Field Services



Right Side / 12-03-2020



Material Hopper / 12-04-2020

Aspen Field Services

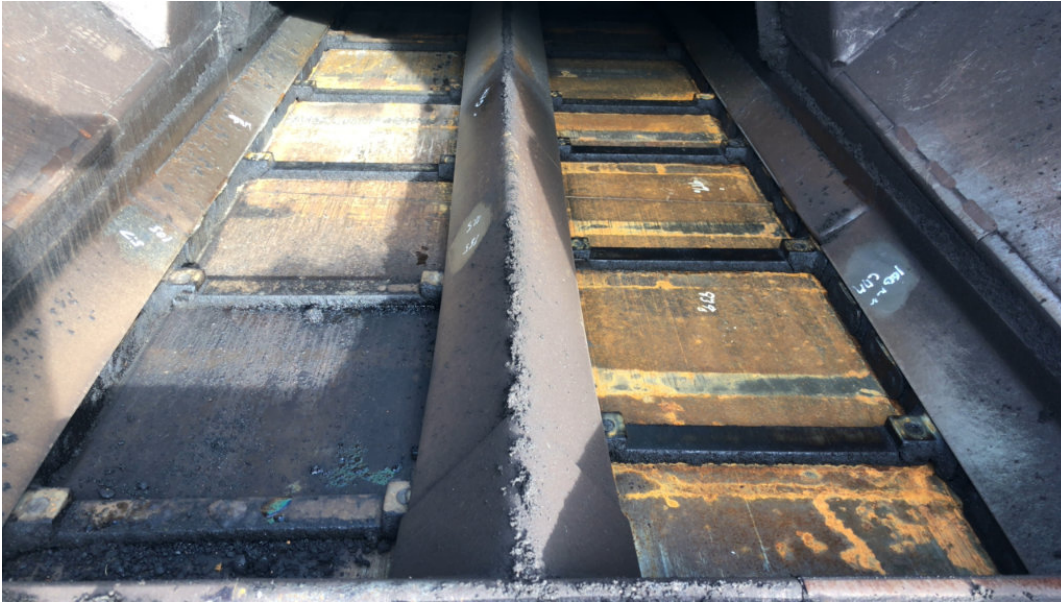


Material Hopper / 12-03-2020



Material Hopper / 12-03-2020

Aspen Field Services



Material Hopper / 12-03-2020



Rear / 12-03-2020

Aspen Field Services



Engine Compartment / 12-03-2020



Batteries / 12-03-2020

Aspen Field Services



Intake Screen / 12-03-2020

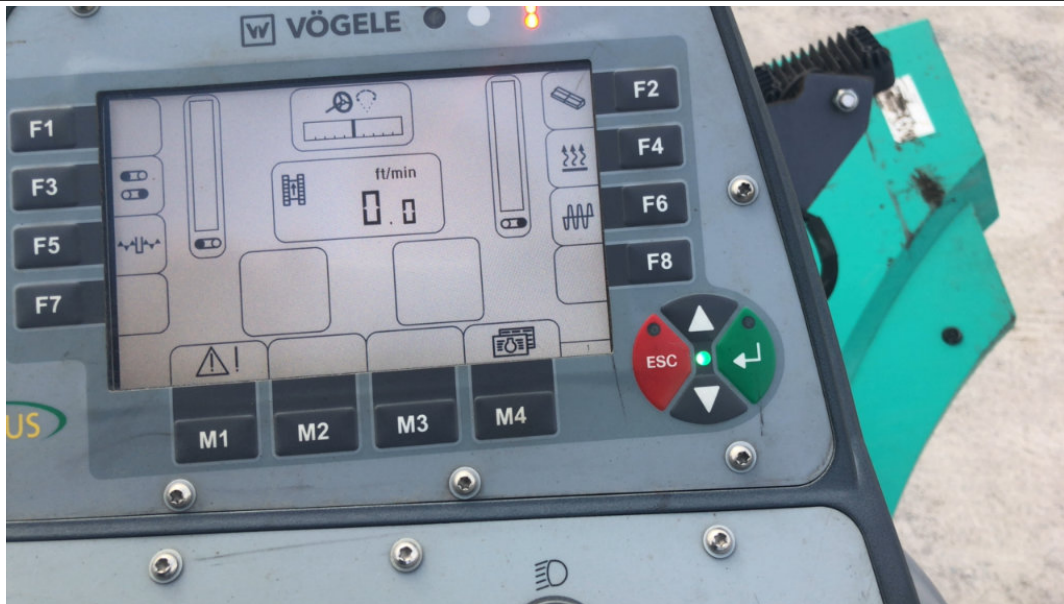


Mufflers / 12-03-2020

Aspen Field Services



6138 / Hours / 12-03-2020



Display / Options / 12-03-2020

Aspen Field Services



Controls / Options / 12-03-2020



None / Keyless Start / 12-03-2020

Aspen Field Services



Pedals / 12-03-2020



Handrails / 12-03-2020

Aspen Field Services



Steps / 12-03-2020



Extending Creed / 12-03-2020

Aspen Field Services



Hydraulics / 12-03-2020



Hydraulics / 12-03-2020

Aspen Field Services



Hydraulics / 12-03-2020



Hydraulics / 12-03-2020

Aspen Field Services



Wiring / 12-03-2020



2017 Vogele 5100-2 / 12-03-2020

Aspen Field Services



2017 Vogele 5100-2 / 12-03-2020



Gouge / Left Track Condition / 12-03-2020

Aspen Field Services



Gouge / Left Track Condition / 12-03-2020



Left Track Depth Percentage / 12-03-2020

Aspen Field Services



Right Track Condition / 12-03-2020



Right Track Depth Percentage / 12-03-2020