



Aspen Field Services

Job #:22485

Serial #:ALJ820299



# Aspen Field Services

Job #: 22485 / 06-18-2020

Serial #: ALJ820299

For more information, visit:

[wellsfargo.com/equipmentseller](https://wellsfargo.com/equipmentseller)

2017 BOBCAT S650

SN: ALJ820299

Hours: 2460

Video:



**PHOTOS:** Click the link below to view all high resolution images  
[https://app.aspenfieldservices.com/api/attachments/get/8Da8Za9c4a5fAuEjC/report\\_0022485\\_8Da8Za9c4a5fAuEjC.pdf](https://app.aspenfieldservices.com/api/attachments/get/8Da8Za9c4a5fAuEjC/report_0022485_8Da8Za9c4a5fAuEjC.pdf)

NOTE: By clicking above, you will be redirected to Aspen Field Services' website, not a Wells Fargo property.

Inspection Details	
Year	2017
Make	Bobcat
Model	S650
Serial Number	ALJ820299
Type	Wheel Loader
Inspection Date	6/18/2020
Location of Business	Bobcat of Toronto - 241 Deerhust Dr., Brampton, ON L6T 5K3
Attachment(s)/ Accessory(s)	Bucket Serial Number Not Visible
2-Speed	Yes
Enclosed Cab	Yes
Engine MFR	Doosan Infracore
Controls	Selectable Joystick Controls
High Flow Hydraulics - Sticker	No





# Aspen Field Services

Job #: 22485 / 06-18-2020

Serial #: ALJ820299

For more information, visit:

[wellsfargo.com/equipmentseller](http://wellsfargo.com/equipmentseller)

2017 BOBCAT S650

SN: ALJ820299

Hours: 2460

Inspection Details Cont'd	
Hours	2460
Cab A-C	Yes
Cab Heat	Yes
Power Bob-Tach	Yes
Hydraulic X-Change	NA
Backup Camera	No
Ride Control	Yes
Deluxe Instrumentation	Yes
Keyless Start	Yes
Visual Inspection	Clean
Operational Test	Passed - Moved forward/back ward - lifted up and down
Front Right Tire Part Number	Non Bobcat: PrimeX
Front Right Tire Depth Percentage	32%
Front Right Tire Condition	Good Condition
Front Right Tire Depth Measurement	8/32
Front Left Tire Part Number	Non Bobcat: PrimeX
Front Left Tire Depth Percentage	36%
Front Left Tire Condition	Good Condition
Front Left Tire Depth Measurement	9/32
Back Right Tire Part Number	Non Bobcat: PrimeX
Back Right Tire Depth Percentage	52%
Back Right Tire Condition	Good Condition
Back Right Tire Depth Measurement	13/32
Back Left Tire Part Number	Non Bobcat: PrimeX
Back Left Tire Depth Percentage	52%
Back Left Tire Condition	Good Condition
Back Left Tire Depth Measurement	13/32
Left Track Part Number	NA
Left Track Depth Percentage	NA
Left Track Condition	NA
Left Track Depth Measurement	NA
Right Track Part Number	NA
Right Track Depth Percentage	NA
Right Track Condition	NA

Inspection Details Cont'd	
Right Track Depth Measurement	NA
Mismatched Tires	No
Mismatched Tracks	NA
Tilt Cylinders	No Leaks
Lift Cylinders	No Leaks
Boom Arms Operations	Working
Seat	Good Condition
Tailgate Lights	Good Condition
Working Lights	Good Condition
Front Door	No Damages
Side Glass Complete	No Damages
Rear and Top Window	No Damages
Boom Arms Damages	No Damages
Rear Door	Opens and closes and stays closed
Mufflers	Good Condition
ROPS Condition	Good Condition
Power Bob-Tach Condition	Non operational
Cab A-C Condition	Working
Cab Heat Condition	Working
Intake Screen	Good Condition
Interior	Good
Engine Compartment	Clean
Hydraulic X-Change Condition	NA
Customer Decals Visible on Unit	No
Comments	As seen in the video, the power bob-tach is unable to move into lock position.



# Aspen Field Services



Front Left / 06-18-2020



Front Right / 06-18-2020



# Aspen Field Services



Rear View / 06-18-2020



Seat / 06-18-2020

# Aspen Field Services



Rear View / 06-18-2020



Serial Number: ALJ820299 / 06-19-2020



# Aspen Field Services



Not Visible / Attachment Serial Plate / 06-18-2020



Bucket / 06-18-2020

# Aspen Field Services



Left / Lift Cylinder / 06-18-2020



Left / Lift Cylinder / 06-18-2020



# Aspen Field Services



Right / Lift Cylinder / 06-18-2020



Right / Lift Cylinder / 06-18-2020

# Aspen Field Services



Right Boom Arm / 06-18-2020



Left Boom Arm / 06-18-2020



# Aspen Field Services



Left / Tilt Cylinder / 06-18-2020



Left / Tilt Cylinder / 06-18-2020



# Aspen Field Services



Right / Tilt Cylinder / 06-18-2020



Right / Tilt Cylinder / 06-18-2020



# Aspen Field Services

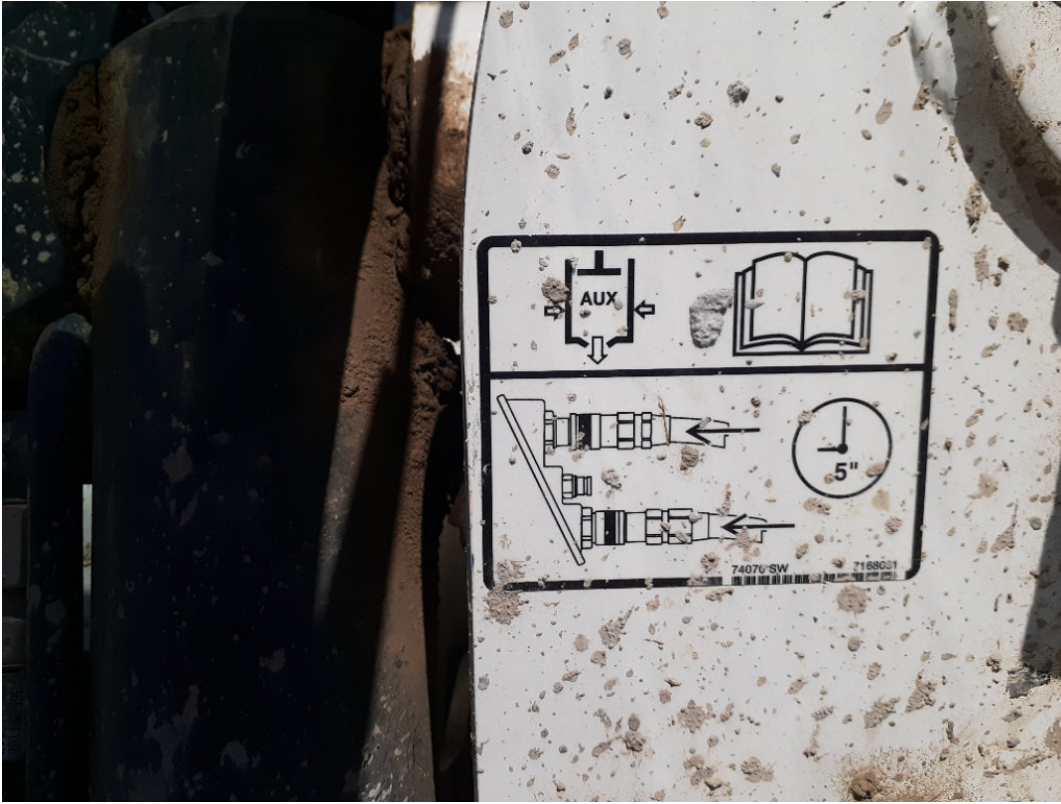


Power Bob-Tach Condition / 06-22-2020



2 Speed / 06-18-2020

# Aspen Field Services



None / High Flow Hydraulics Sticker / 06-19-2020



Front View / 06-19-2020



# Aspen Field Services



Side Glass / 06-18-2020



Side Glass / 06-18-2020



# Aspen Field Services



Top Glass / ROPS / 06-18-2020



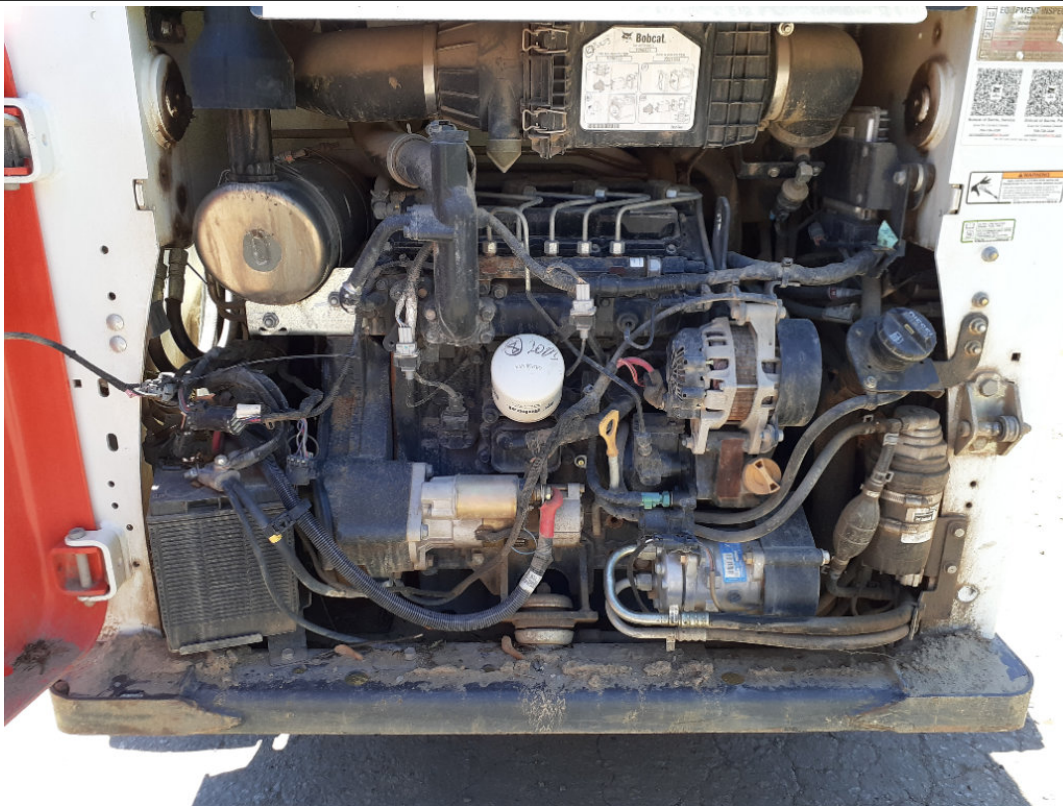
Rear Window / 06-18-2020



# Aspen Field Services

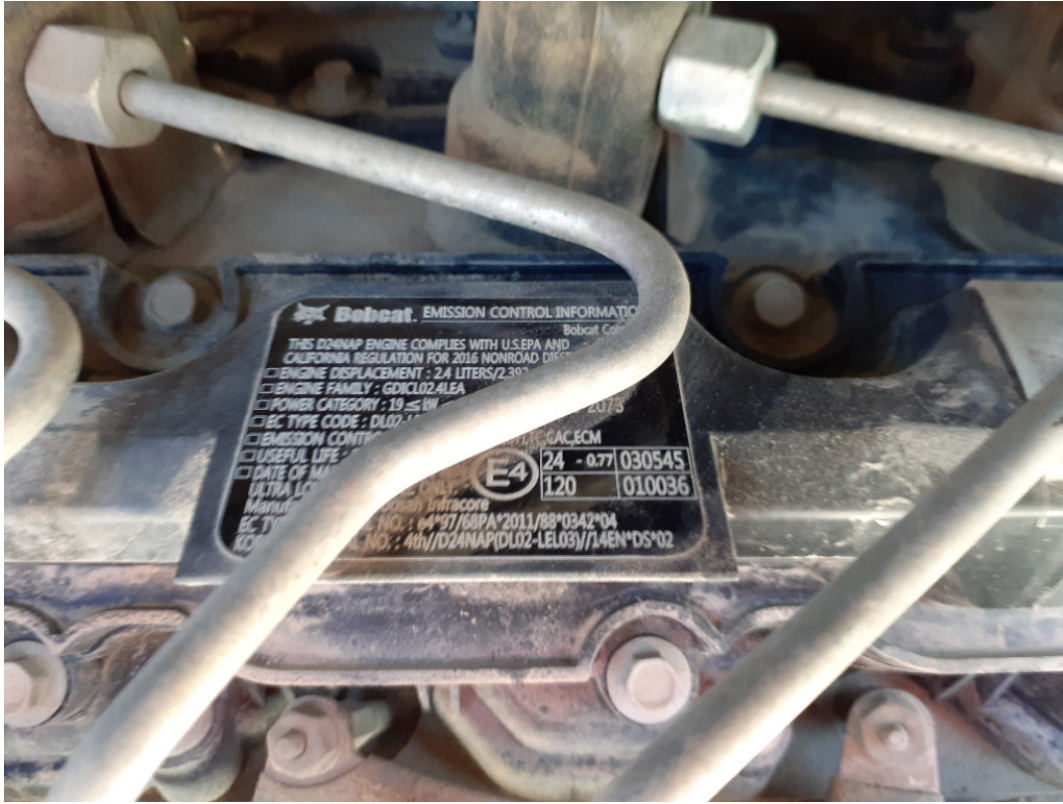


Rear Door / 06-18-2020



Engine Compartment / 06-18-2020

# Aspen Field Services



Engine MFR / 06-18-2020



# Aspen Field Services



Ride Control / 06-18-2020

# Aspen Field Services



Muffler / 06-18-2020



Intake Screen / 06-18-2020



# Aspen Field Services



Front Right Tire / 06-18-2020



Front Right Tire Depth Percentage / 06-18-2020

# Aspen Field Services



Front Right Tire Brand / 06-18-2020



Back Right Tire / 06-19-2020



# Aspen Field Services



Back Right Tire Tread Depth / 06-19-2020



Back Right Tire Brand / 06-19-2020

# Aspen Field Services



Front Left Tire / 06-19-2020



Front Left Tire Depth Percentage / 06-22-2020



# Aspen Field Services



Front Left Tire Brand / 06-19-2020



Back Left Tire / 06-19-2020



# Aspen Field Services



Back Left Tire Tread Depth / Tire/Track Depth / 06-19-2020



Back Left Tire Brand / Tire/Track Part Number / 06-19-2020



# Aspen Field Services



2460 / Hours / 06-18-2020



Active Warnings / 06-18-2020

# Aspen Field Services



Controls / 06-18-2020



Controls / 06-18-2020



# Aspen Field Services



Controls / 06-18-2020



Controls / 06-18-2020

# Aspen Field Services



None / Backup Camera / 06-18-2020



# Aspen Field Services



Left / Controls / 06-18-2020

# Aspen Field Services



Right / Controls / 06-18-2020



# Aspen Field Services



HVAC / 06-18-2020



Left Pedal / 06-18-2020

# Aspen Field Services



Right Pedal / 06-18-2020



Working Lights / 06-18-2020



# Aspen Field Services



Tail Lights / 06-19-2020